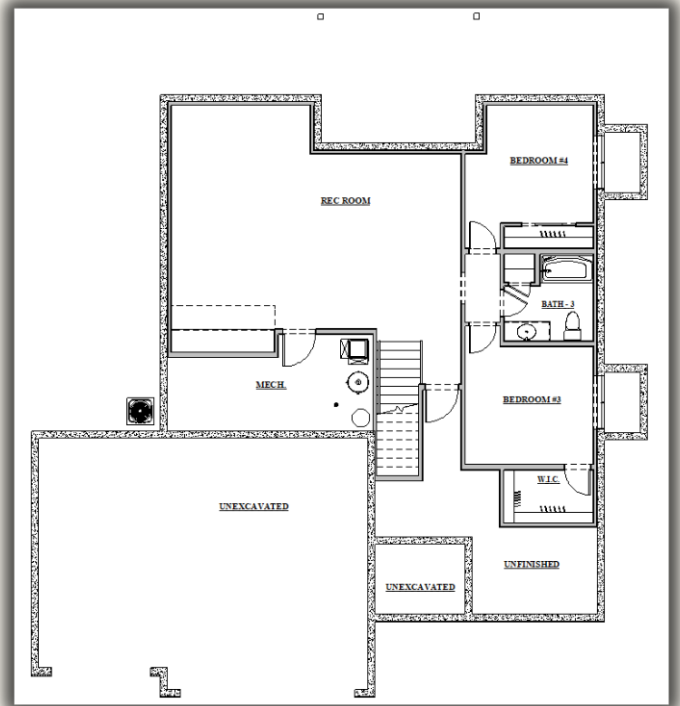
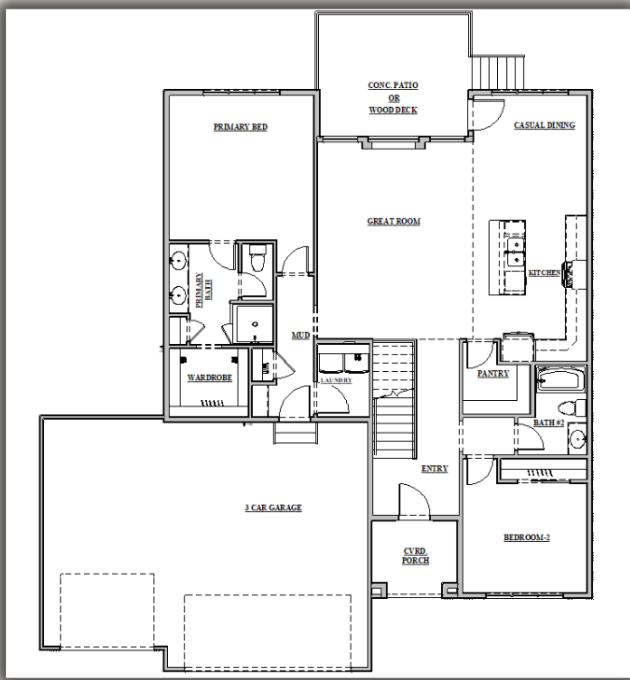


# The Paige



## PROPERTY FEATURES

- 4 Bedrooms
- 3 Bathrooms
- 3 car garage
- 1561 sqft Main / 1049 sqft Below**

**STARTING AT:**

**\$435,000**

Includes finished basement  
does not include lot



VINTON HOMES



# **STANDARD SPECIFICATIONS**

- **Soft Close, dove-tailed white cabinets**
- **36" Kitchen Cabinets**
- **7 Quartz Countertop options**
- **7 LVP Main Floor and bathroom flooring options**
- **7 LVT Primary Bathroom flooring options**
- **Dreamweaver Plush or patterned carpet**
- **8 LB moisture barrier carpet pad**
- **Color Wheel Kitchen backsplash (Brick or Straight Lay patterns)**
- **Jacekle Brand Tile**
- **Linear Electric Fireplace**
- **5 1/2 inch Baseboards/ 3 1/2 inch casements on main floor**
- **Nickel Kitchen Hardware**
- **Frigidaire Stainless Steel Appliances**
- **Gas Stove**
- **Kingsmore Brushed Nickel Marcato or Cantabile Bathroom Faucets and Tub/Shower Combo**
- **Kingsmore Brushed Nickel 15" Marcato Kitchen Faucet**
- **Kingsmore Brushed Nickel Cantabile or Marcato Bathroom Accessories**
- **Primary Bathroom Tiled shower walls with fiberglass pan**
- **Custom Closet Shelving- Painted press board**
- **James Hardi Siding**
- **Thermatru Front Door (3 styles to choose from)**
- **Mounted TV Height electrical outlets**
- **Stone on Exterior (plan specific)**
- **Oversized Vinyl Windows-Sierra Pacific**
- **Drywall Wrapped Windows**
- **Trane High Efficiency HVAC**
- **Insulated Steel Garage Doors**
- **Floor Truss System**
- **Sump Pump**
- **Passive Radon System**
- **2 x 6 Exterior walls**
- **Steel Gutters**
- **Automatic 5 Zones sprinkler system**
- **Finished Basement (includes Rec Room/ 2 Bedrooms/ 1 Bathroom**

**\*\*\*Subject to change based on plans and availability\*\*\***